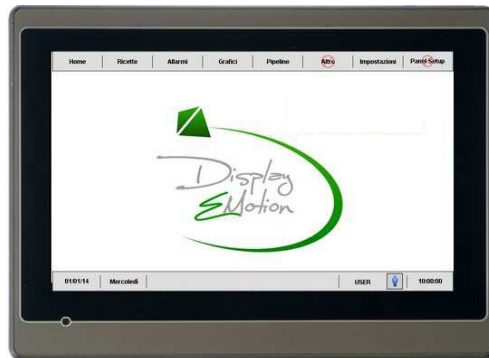


## PT070-WST4B



<b>Display</b>	Size	7" diagonal (16 : 9)
	Max. Resolution	800 x 480
	Type	TFT LCD
	Max. Colors	TFT True Color ; 65536 Colori
	Backlight Type	LED
	Backlight Life (hr)	20000
	Display Contrast	500
	Luminance (cd/m2)	300
	Operation	RTOS
	Touch Panel	4 Wire Analog Touch Panel
	CPU	CPU RISC ARM 32Bit 200MHz
	Backup SRAM	128 KB
	Working Memory	64 MB
	Built-in Storage	8 MB (NOR Flash) + 128 MB (NAND Flash)
	Real Time Clock (RTC)	Yes
<b>Communication Interface</b>	Micro-SD Slot	Yes
	USB Client	Yes
	USB Host	Yes
	Serial	<b>COM1</b> RS232/RS422/RS485
		<b>COM2</b> RS232/RS485
		<b>COM3</b> RS232
Ethernet	YES(10/100Mbps)	
<b>Power</b>	Supply Voltage	24VDC±10% Isolated
	Consumption	15W
<b>Environment</b>	Operating Temperature	-10°~50°
	Relative Humidity	10%~90%
	Ingress Protection	IP66
	Cooling	Natural Cooling
<b>Dimension</b>	Dimension WxHxD (mm)	188.0 x 143.3 x 36.1
	Cutout Dimension WxH (mm)	175.0 x 132.6
	Net Weight (kg)	0.6 KG

## PT080-TST4B



<b>Display</b>	Size	8" diagonal (4 : 3)
	Max. Resolution	800 x 600
	Type	TFT LCD
	Max. Colors	TFT True Color ; 65536 Colori
	Backlight Type	LED
	Backlight Life (hr)	20000
	Display Contrast	500
	Luminance (cd/m2)	250
	Operation	RTOS
	Touch Panel	4 Wire Analog Touch Panel
	CPU	CPU RISC ARM 32Bit 200MHz
	Backup SRAM	128 KB
	Working Memory	64 MB
	Built-in Storage	8 MB (NOR Flash) + 128 MB (NAND Flash)
	Real Time Clock (RTC)	Yes
<b>Communication Interface</b>	Micro-SD Slot	Yes
	USB Client	Yes
	USB Host	Yes
	Serial	<b>COM1</b> RS232/RS422/RS485
		<b>COM2</b> RS232/RS485
		<b>COM3</b> RS232
Ethernet	YES(10/100Mbps)	
<b>Power</b>	Supply Voltage	24VDC±10% Isolated
	Consumption	20W
<b>Environment</b>	Operating Temperature	0°~50°
	Relative Humidity	10%~90%
	Ingress Protection	IP66
	Cooling	Natural Cooling
<b>Dimension</b>	Dimension WxHxD (mm)	231.5 x 174.5 x 42.5
	Cutout Dimension WxH (mm)	221.0 x 164.0
	Net Weight (kg)	0.93 KG

## PT100-WST4B



<b>Display</b>	Size	10.1" diagonal (16 : 9)
	Max. Resolution	1024 x 600
	Type	TFT LCD
	Max. Colors	TFT True Color ; 65536 Colori
	Backlight Type	LED
	Backlight Life (hr)	20000
	Display Contrast	500
	Luminance (cd/m2)	200
	Operation	RTOS
	Touch Panel	4 Wire Analog Touch Panel
	CPU	CPU RISC ARM 32Bit 200MHz
	Backup SRAM	128 KB
	Working Memory	64 MB
	Built-in Storage	8 MB (NOR Flash) + 128 MB (NAND Flash)
	Real Time Clock (RTC)	Yes
<b>Communication Interface</b>	Micro-SD Slot	Yes
	USB Client	Yes
	USB Host	Yes
	Serial	<b>COM1</b> RS232/RS422/RS485
		<b>COM2</b> RS232/RS485
<b>COM3</b> RS232		
Ethernet	YES(10/100Mbps)	
<b>Power</b>	Supply Voltage	24VDC±10% Isolated
	Consumption	20W
<b>Environment</b>	Operating Temperature	-10°~50°
	Relative Humidity	10%~90%
	Ingress Protection	IP66
	Cooling	Natural Cooling
<b>Dimension</b>	Dimension WxHxD (mm)	270.1 x 212.1 x 42.5
	Cutout Dimension WxH (mm)	259.5 x 201.5
	Net Weight (kg)	1.2 KG

## PT104-TST4B



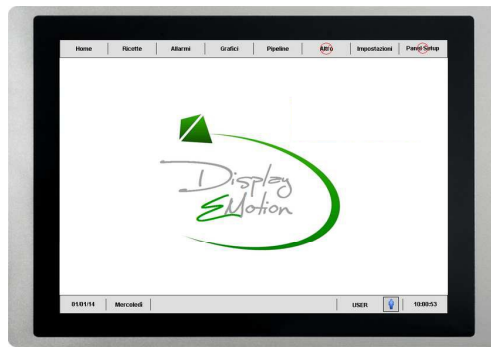
<b>Display</b>	Size	10.4" diagonal (4 : 3)
	Max. Resolution	800 x 600
	Type	TFT LCD
	Max. Colors	TFT True Color ; 65536 Colori
	Backlight Type	LED
	Backlight Life (hr)	20000
	Display Contrast	400
	Luminance (cd/m2)	400
	Operation	RTOS
	Touch Panel	4 Wire Analog Touch Panel
	CPU	CPU RISC ARM 32Bit 200MHz
	Backup SRAM	128 KB
	Working Memory	64 MB
	Built-in Storage	8 MB (NOR Flash) + 128 MB (NAND Flash)
	Real Time Clock (RTC)	Yes
<b>Communication Interface</b>	Micro-SD Slot	Yes
	USB Client	Yes
	USB Host	Yes
	Serial	<b>COM1</b> RS232/RS422/RS485
		<b>COM2</b> RS232/RS485
<b>COM3</b> RS232		
Ethernet	YES(10/100Mbps)	
<b>Power</b>	Supply Voltage	24VDC±10% Isolated
	Consumption	20W
<b>Environment</b>	Operating Temperature	0°~50°
	Relative Humidity	10%~90%
	Ingress Protection	IP66
	Cooling	Natural Cooling
<b>Dimension</b>	Dimension WxHxD (mm)	270.1 x 212.1 x 42.5
	Cutout Dimension WxH (mm)	259.5 x 201.5
	Net Weight (kg)	1.2 KG

# PT121-TST4B



<b>Display</b>	Size	12.1" diagonal (4 : 3)
	Max. Resolution	800 x 600
	Type	TFT LCD
	Max. Colors	TFT True Color ; 65536 Colori
	Backlight Type	LED
	Backlight Life (hr)	50000
	Display Contrast	500
	Luminance (cd/m2)	450
	Operation	RTOS
	Touch Panel	4 Wire Analog Touch Panel
	CPU	CPU RISC ARM 32Bit 200MHz
	Backup SRAM	128 KB
	Working Memory	64 MB
	Built-in Storage	8 MB (NOR Flash) + 128 MB (NAND Flash)
Real Time Clock (RTC)	Yes	
<b>Communication Interface</b>	Micro-SD Slot	No
	USB Client	Yes
	USB Host	Yes
	Serial	<b>COM1</b> RS232/RS422/RS485
		<b>COM2</b> RS232/RS422/RS485
		<b>COM3</b> RS232
Ethernet	YES(10/100Mbps)	
<b>Power</b>	Supply Voltage	24VDC±10% Isolated
	Consumption	18W
<b>Environment</b>	Operating Temperature	0°~50°
	Relative Humidity	10%~90%
	Ingress Protection	IP66
	Cooling	Natural Cooling
<b>Dimension</b>	Dimension WxHxD (mm)	351.0 x 241.0 x 54.5
	Cutout Dimension WxH (mm)	301.5 x 228.0
	Net Weight (kg)	2.2 KG

## PT150-XSD4B



<b>Display</b>	Size	15" diagonal (4 : 3)
	Max. Resolution	1024 x 768
	Type	TFT LCD
	Max. Colors	TFT True Color ; 65536 Colori
	Backlight Type	LED
	Backlight Life (hr)	50000
	Display Contrast	700
	Luminance (cd/m2)	350
	Operation	RTOS
	Touch Panel	4 Wire Analog Touch Panel
	CPU	CPU RISC ARM 32Bit 200MHz
	Backup SRAM	128 KB
	Working Memory	64 MB
	Built-in Storage	8 MB (NOR Flash) + 128 MB (NAND Flash)
Real Time Clock (RTC)	Yes	
<b>Communication Interface</b>	Micro-SD Slot	Yes
	USB Client	Yes
	USB Host	Yes
	Serial	<b>COM1</b> RS232/RS422/RS485
		<b>COM2</b> RS232/RS485
<b>COM3</b> RS232		
Ethernet	YES(10/100Mbps)	
<b>Power</b>	Supply Voltage	24VDC±10% Isolated
	Consumption	15W
<b>Environment</b>	Operating Temperature	0°~50°
	Relative Humidity	10%~90%
	Ingress Protection	IP66
	Cooling	Natural Cooling
<b>Dimension</b>	Dimension WxHxD (mm)	399.1 x 297.6 x 55
	Cutout Dimension WxH (mm)	384.5 x 283.0
	Net Weight (kg)	2.68 KG

# PT2043-31ST

---



Display *Emotion*

# Product specification

Hardware Parameter	Display	4.3''16:9 TFT LCD display
	Resolution (WxH)	480x272
	Colors	65K
	Brightness	400 cd/m <sup>2</sup>
	Backlight	LED
	LCD Life	20000 hours
	Touch Panel	4-line industrial resistive touch screen
	CPU	RISC ARM9 32bit 300MHz
	BB Memory	128KB
	Working Memory	64MB
	Application Memoy	About 40MB
	Data File Memory	64MB
	RTC	Built in (Unchargeable Battery type,5 years battery life)
	SD Card	None
	Ethernet	1-line 10M/100M suitable
	USB Port	1 USB Slave 2.0 port, 1 USB Host 2.0 port
	Download Project	USB Slave/U-disc /Ethernet
COM Port	COM1 : RS232 COM2 : RS422/485 COM3 : RS485 COM4 : RS485	



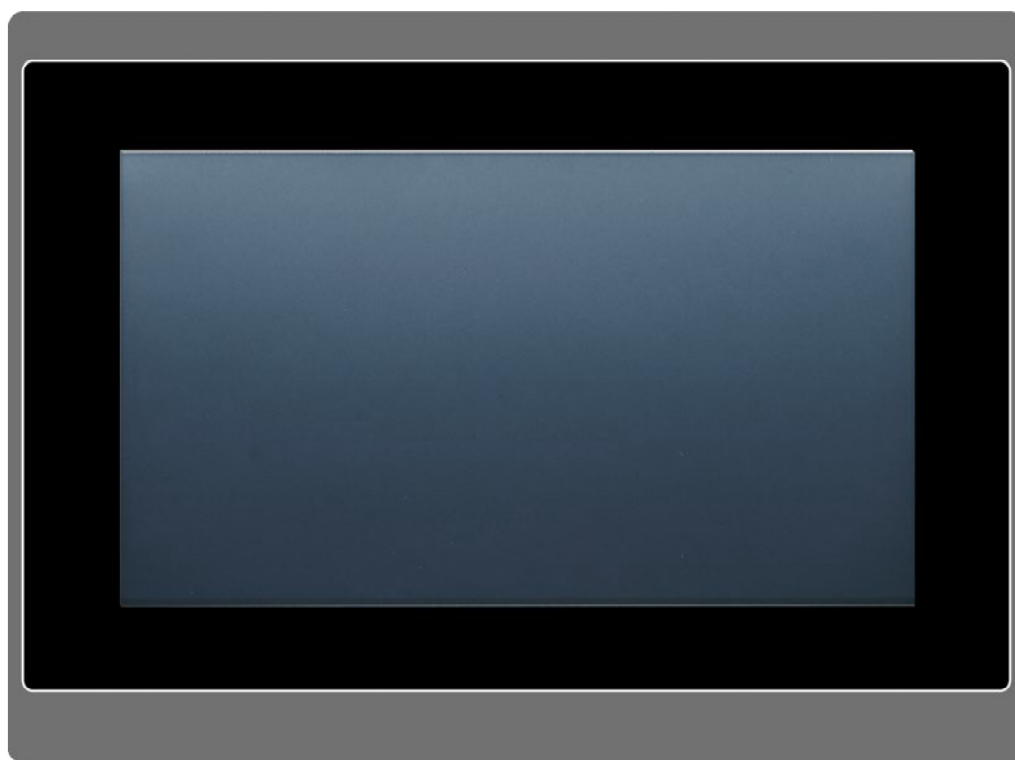
# Product specification

---

Electrical Specifications	Input Power	24Vdc, $\pm 10\%$
	Power Consumption	10W
Environmental Specifications	Operating Temperature	-10~60°C
	Operating Humidity	10~90%RH (Non-condensate)
	Shock	Half sine, 20G, 11ms duration
	Vibration Endurance	random vibration 1 Grms (5 ~ 500 Hz)
	EMI	FCC Part 15 Class A
	CE	EN61000-6-2, EN61000-6-4
	UL	UL61010
	IP	IP66 (NEMA 4)
	Cooling Method	Natural Cooling
Mechanical Index	Dimension	129.0 x 103.0 x 33.0 mm
	Panel Cutout	118.5 x 92.5 mm
	Weight	230g

# PT2070-WST

---



Display *Emotion*

# Product specification

Hardware Parameter	Display	7.0"16:9 TFT LCD display
	Resolution (WxH)	800x480
	Colors	65K
	Brightness	400 cd/m <sup>2</sup>
	Backlight	LED
	LCD Life	20000 hours
	Touch Panel	4-line industrial resistive touch screen
	CPU	RISC ARM9 32bit 300MHz
	BB Memory	128KB
	Working Memory	64MB
	Application Memoy	About 40MB
	Data File Memory	64MB
	RTC	Built in (Unchargeable Battery type,5 years battery life)
	SD Card	Micro SD (TF) Card
	Ethernet	1-line 10M/100M suitable
	USB Port	1 USB Slave 2.0 port, 1 USB Host 2.0 port
	Download Project	USB Slave/U-disc /Ethernet
COM Port	COM1 : RS232/RS422/RS485 COM2 : RS232/RS485 COM3 : RS232	

# Product specification

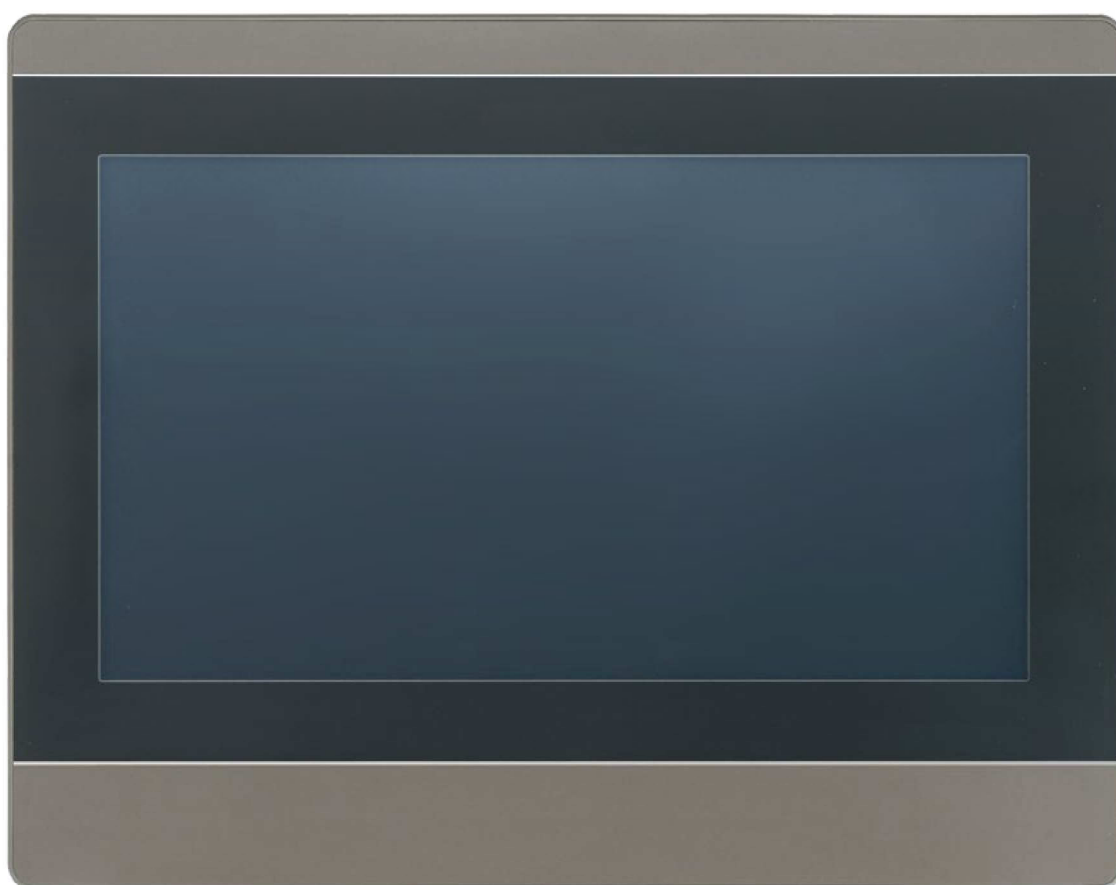
---

Electrical Specifications	Input Power	24Vdc, ±10%
	Power Consumption	20W
Environmental Specifications	Operating Temperature	-10~60°C
	Operating Humidity	10~90%RH (Non-condensate)
	Shock	Half sine, 20G, 11ms duration
	Vibration Endurance	random vibration 1 Grms (5 ~ 500 Hz)
	EMI	FCC Part 15 Class A
	CE	EN61000-6-2, EN61000-6-4
	UL	UL61010
	IP	IP66 (NEMA 4)
	Cooling Method	Natural Cooling
Mechanical Index	Dimension	189.6 x 144.9 x 30.3 mm
	Panel Cutout	175 x 132.5 mm
	Weight	550g

Display Emotion

# PT2100-51ST

---



Display *Emotion*

# Product specification

Hardware Parameter	Display	10.1"16:9 TFT LCD display
	Resolution (WxH)	1024x600
	Colors	65K
	Brightness	350 cd/m <sup>2</sup>
	Backlight	LED
	LCD Life	20000 hours
	Touch Panel	4-line industrial resistive touch screen
	CPU	RISC ARM9 32bit 300MHz
	BB Memory	128KB
	Working Memory	64MB
	Application Memoy	About 40MB
	Data File Memory	64MB
	RTC	Built in (Unchargeable Battery type,5 years battery life)
	SD Card	None
	Ethernet	1-line 10M/100M suitable
	USB Port	1 USB Slave 2.0 port, 1 USB Host 2.0 port
	Download Project	USB Slave/U-disc /Ethernet
COM Port	COM1 : RS232 COM2 : RS422/RS485 COM3 : RS485 COM4 : RS485 COM5 : RS485	

# Product specification

---

Electrical Specifications	Input Power	24Vdc, $\pm 10\%$
	Power Consumption	20W
Environmental Specifications	Operating Temperature	-10~60°C
	Operating Humidity	10~90%RH (Non-condensate)
	Shock	Half sine, 20G, 11ms duration
	Vibration Endurance	random vibration 1 Grms (5 ~ 500 Hz)
	EMI	FCC Part 15 Class A
	CE	EN61000-6-2, EN61000-6-4
	UL	UL61010
	IP	IP66 (NEMA 4)
	Cooling Method	Natural Cooling
Mechanical Index	Dimension	270.8 x 212.8 x 42.5 mm
	Panel Cutout	259.0 x 201.0 mm
	Weight	1100g

# PT2104-51ST

---



Display *Emotion*



## Product specification

Hardware Parameter	Display	10.4"4:3 TFT LCD display
	Resolution (WxH)	800x600
	Colors	65K
	Brightness	400 cd/m <sup>2</sup>
	Backlight	LED
	LCD Life	20000 hours
	Touch Panel	4-line industrial resistive touch screen
	CPU	RISC ARM9 32bit 300MHz
	BB Memory	128KB
	Working Memory	64MB
	Application Memoy	About 40MB
	Data File Memory	64MB
	RTC	Built in (Unchargeable Battery type,5 years battery life)
	SD Card	None
	Ethernet	1-line 10M/100M suitable
	USB Port	1 USB Slave 2.0 port, 1 USB Host 2.0 port
	Download Project	USB Slave/U-disc /Ethernet
	COM Port	COM1 : RS232 COM2 : RS422/RS485 COM3 : RS485 COM4 : RS485 COM5 : RS485

# Product specification

Electrical Specifications	Input Power	24Vdc, $\pm 10\%$
	Power Consumption	20W
Environmental Specifications	Operating Temperature	-10~60°C
	Operating Humidity	10~90%RH (Non-condensate)
	Shock	Half sine, 20G, 11ms duration
	Vibration Endurance	random vibration 1 Grms (5 ~ 500 Hz)
	EMI	FCC Part 15 Class A
	CE	EN61000-6-2, EN61000-6-4
	UL	UL61010
	IP	IP66 (NEMA 4)
	Cooling Method	Natural Cooling
Mechanical Index	Dimension	270.8 x 212.8 x 42.5 mm
	Panel Cutout	259.0 x 201.0 mm
	Weight	1100g

# PT2150-51ST

---



Display *Emotion*

# Product specification

Hardware Parameter	Display	15.0"4:3 TFT LCD display
	Resolution (WxH)	1024x768
	Colors	65K
	Brightness	350 cd/m <sup>2</sup>
	Backlight	LED
	LCD Life	50000 hours
	Touch Panel	4-line industrial resistive touch screen
	CPU	RISC ARM9 32bit 300MHz
	BB Memory	128KB
	Working Memory	64MB
	Application Memoy	About 40MB
	Data File Memory	64MB
	RTC	Built in (Unchargeable Battery type,5 years battery life)
	SD Card	None
	Ethernet	1-line 10M/100M suitable
	USB Port	1 USB Slave 2.0 port, 1 USB Host 2.0 port
	Download Project	USB Slave/U-disc /Ethernet
	COM Port	COM1 : RS232 COM2 : RS422/RS485 COM3 : RS485 COM4 : RS485 COM5 : RS485

# Product specification

---

Electrical Specifications	Input Power	24Vdc, $\pm 10\%$
	Power Consumption	20W
Environmental Specifications	Operating Temperature	-10~60°C
	Operating Humidity	10~90%RH (Non-condensate)
	Shock	Half sine, 20G, 11ms duration
	Vibration Endurance	random vibration 1 Grms (5 ~ 500 Hz)
	EMI	FCC Part 15 Class A
	CE	EN61000-6-2, EN61000-6-4
	UL	UL61010
	IP	IP66 (NEMA 4)
	Cooling Method	Natural Cooling
Mechanical Index	Dimension	399.1 x 297.6 x 57.5 mm
	Panel Cutout	384.5 x 283.0 mm
	Weight	3000g